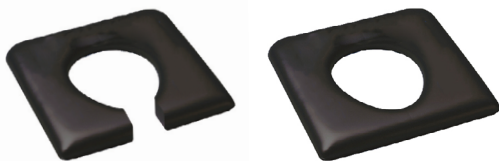


# aspire™ Shower Commode Accessories

## Hand Made Pressure Reducing Commode Seats



Hand made pressure care seat surface designed for comfort during extended use and pressure injury prevention

European Dartex anti-microbial four-way stretch fabric is waterproof and breathable

Multi-layered foam, with memory foam top layer, to maximise immersion and envelopment for pressure distribution

Sealed seams for infection control management

Adaptable seat attachment to suit all shower commode brands

Max seat height: 65mm

Fully customisable options to suit specific needs (see script form on page 4)

**1 YEAR WARRANTY**

Code	Description	Width
BTC089122	Pressure Reducing – Open Front	320
BTC089124	Pressure Reducing – Closed Front	320
BTC089126	Pressure Reducing – Open Front	400
BTC089128	Pressure Reducing – Closed Front	400
BTC089130	Pressure Reducing – Open Front	460
BTC089140	Pressure Reducing – Closed Front	460
BTC089150	Pressure Reducing – Open Left	460
BTC089160	Pressure Reducing – Open Right	460
BTC089170	Pressure Reducing – Open Front	500
BTC089180	Pressure Reducing – Closed Front	500
BTC089190	Pressure Reducing – Open Front	550
BTC089200	Pressure Reducing – Closed Front	550
BTC089210	Pressure Reducing – Open Front	600
BTC089220	Pressure Reducing – Closed Front	600
BTC089230	Pressure Reducing – Open Front	650
BTC089240	Pressure Reducing – Closed Front	650
BTC089250	Pressure Reducing - Customised (See Script Form)	

## Padded Commode Seats



Moulded and seamless soft PU seats designed for comfort and durability

Easy clean, fully sealed surface for infection control

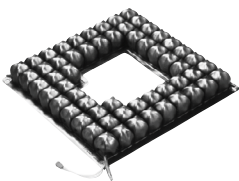
Adaptable to most shower commode brands

M6 Tri Nut assembly kit needed for seat attachment. Comes as standard with all commodes. Available as a spare part if lost (GSP342405)

Code	Description	Width
BTC066600	Open Seat	460
BTC066750	Open Seat	530
BTC066800	Open Seat	600
BTC066700	Closed Seat	460

**1 YEAR WARRANTY**

## ROHO® Padded Seats



High level pressure relief for high needs users

Interconnected air cells help disperse pressure

Includes cover and fully washable

**1 YEAR WARRANTY**

Code	Description
BTC067500	Closed Seat – 380 x 425
BTC067900	Closed Seat – 425 x 425
BTC067600	Closed Seat – 425 x 470
BTC067300	Closed Seat – 470 x 470

## Elevating Legrests



For leg and foot positioning or elevation (i.e. to treat oedema)

Legrest is adjustable to six angles

Footplate is height and angle adjustable

Fits all Aspire Shower Commodes with swing away legrests

**1 YEAR WARRANTY**

Code	Description
BTC067108M	Left – Non-Tilt Only – Matte Finish
BTC067109M	Right – Non-Tilt Only – Matte Finish
BTC067110M	Left – Tilt-in-Space Only – Matte Finish
BTC067115M	Right – Tilt-in-Space Only – Matte Finish



### Stump Support

Adaptable clamp fits most shower commode brands  
Not compatible with BTC061200, BTC068010 and BTC068020



### Advanced Headrest

Padded, height and depth adjustable for positioning and support  
Adaptable to other brands  
Not compatible with BTC061200, BTC068010 and BTC068020



### Aspire Self Propelling Conversion Kit

Converts Attendant Propelled Shower Commodes into Self Propelling version  
Not compatible with Bariatric BTC061200, BTC061400, Tilt and Recline BTC066030, BTC066040 or Aluminium Shower Commodes  
BTC068010, BTC068020



### Padded Armrest

Replacement padded armrest  
Compatible with 600 mm wide aspire shower commode only



### Lateral Support

Width and height adjustable thoracic positioning and lumbar spine support  
Adaptable clamp fits other brands  
Not compatible with BTC061200, BTC068010 and BTC068020



### Adjustable Pelvic Belt

Adjustable belt to assist with pelvic and lower thoracic positioning and safety  
Durable and washable to 95°C  
Plastic buckle reduces chill when in contact with user's skin



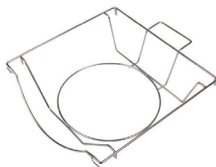
### Oxygen Bottle Carrier

140mm diameter stainless steel holder suits sizes Oxygen Bottle sizes C to D  
Adaptable clamp fits most shower commode brands



### Adjustable IV Pole

Clamp-on stainless steel pole to organise intravenous equipment  
Height adjustable  
Adaptable clamp fits most shower commode brands



### Commode Bowl & Pan Carrier

Stainless steel, slides easily under seat  
Carries a commode bowl with lid, or standard size bed pan  
Compatible with Bowl BTC081610 or Pan BTT151800



### Commode Bowl & Lid

Assists in the collection of waste  
Bowl washable to 95°C



### Bed Pan

Assists in the collection of waste  
Bed pan autoclavable

**Technical Support**  
For technical support, including user manuals or spare parts, and for further information please contact Aidacare on:  
**1300 133 120**  
**aidacare.com.au**

Code	Description	Warranty
BTC067105	Stump Support	1 year
BTC067106	Stump Support – Tilt Commode – Left	1 year
BTC067107	Stump Support – Tilt Commode – Right	1 year
BTC067050	Advanced Headrest	1 year
BTC082900	Self Propelling Conversion Kit	1 year
BTC067000	Padded Armrest	1 year

Code	Description	Warranty
WCA867010	Lateral Support	1 year
BTC067100	Adjustable Pelvic Belt	1 year
BTC067200	Oxygen Bottle Carrier	1 year
BTC067103	Adjustable IV Pole	1 year
BTC066400	Commode Bowl & Pan Carrier	1 year
BTC081610	Commode Bowl & Lid	1 year
BTT151800	Bed Pan	1 year

# Shower Commode Accessories Matrix

## Accessories

## Shower Commode Codes

Code	Description	DVA	BTC066000	BTC066200	BTC066050	BTC066055	BTC061400	BTC065900	BTC066100	BTC066060	BTC066065	BTC061300	BTC061305	BTC066030	BTC066040	BTC061200	BTC068010	BTC068020
			BE04	BE04	BE04	BE04	BE04	BE04	BE04	BE04	BE04	BE04	BE04	BE04	BE04	BE04	BE04	BE04
<b>Padded Seats</b>																		
BTC066600	460mm Open	BE04	●	●				●	●					●				
BTC066700	460mm Closed	BE04	●	●				●	●					●				
BTC066750	530mm Open	BE04			●	●				●	●				●			
BTC066800	600mm Open	BE04					●					●	●					
<b>Hand Made Pressure Seat - Customisation Available</b>																		
BTC089130	460mm Open Front	BE04	●	●				●	●					●				
BTC089140	460mm Closed Front	BE04	●	●				●	●					●				
BTC089170	500mm Open Front	BE04	Compatible with third party shower commodes															
BTC089180	500mm Closed Front	BE04	Compatible with third party shower commodes															
BTC089190	550mm Open Front	BE04			●	●				●	●				●			
BTC089200	550mm Closed Front	BE04			●	●				●	●				●			
BTC089210	600mm Open Front	BE04					●					●	●					
BTC089220	600mm Closed Front	BE04					●					●	●					
BTC089230	650mm Open Front	BE04					●					●	●					
BTC089240	650mm Closed Front	BE04					●					●	●					
<b>ROHO Padded Seat - Additional Accessory for Seats</b>																		
BTC067500	425mm Closed	BE04	●	●	●	●	●	●	●	●	●	●	●	●	●	●	●	●
BTC067900	425mm Closed	BE04	●	●	●	●	●	●	●	●	●	●	●	●	●	●	●	●
BTC067600	470mm Closed	BE04	●	●	●	●	●	●	●	●	●	●	●	●	●	●	●	●
BTC067300	470mm Closed	BE04	●	●	●	●	●	●	●	●	●	●	●	●	●	●	●	●
<b>Other Accessories</b>																		
BTC082900	Self Propelling Kit	BE04	●	●	●	●		●	●	●	●	●	●					
BTC066400	Pan Carrier	BE04	●	●	●	●	●	●	●	●	●	●	●	●	●	●		
BTC081610	Commode Bowl	BE04	●	●	●	●	●	●	●	●	●	●	●	●	●	●	●	●
BTT151800	Bed Pan	BE04	●	●	●	●	●	●	●	●	●	●	●	●	●	●		
BTC067108M	Elevating Leg Rest - L	BE04						●	●	●	●	●	●					
BTC067109M	Elevating Leg Rest - R	BE04						●	●	●	●	●	●					
BTC067110M	Elevating Leg Rest - L	BE04												●	●			
BTC067115M	Elevating Leg Rest - R	BE04												●	●			
BTC067105	Stump Support	BE04	●	●	●	●	●	●	●	●	●	●	●	●	●			
BTC067050	Advanced Head Rest	BE04	●	●	●	●	●	●	●	●	●	●	●	●	●			
WCA867010	Lateral Support	BE04	●	●	●	●	●	●	●	●	●	●	●	●	●			
BTC067200	Oxygen Bottle Carrier	BE04	●	●	●	●	●	●	●	●	●	●	●	●	●	●	●	●
BTC067100	Adjustable Pelvic Strap	BE04	●	●	●	●	●	●	●	●	●	●	●	●	●	●	●	●
BTC067103	Adjustable IV Pole	BE04	●	●	●	●	●	●	●	●	●	●	●	●	●	●	●	●

● Compatible



# Custom Made Shower Commode Seats Script Form

### Client

Name:  
Phone:  
Address:

### Date

Email:  
Fax:

### Therapist

Name:  
Phone:

Email:  
Fax:

### Aidacare Representative

Name:

Email:

Please complete all details below in 1 to 7 and send filled script form to [commodeseats@aidacare.com.au](mailto:commodeseats@aidacare.com.au)

1. Please choose one: Order - Please provide order no.  or  Quote Request

2. Which brand of shower commode will the seat be attached to? (Required):

3. Choose your Fabric:  PU Coated 4 way Stretch Fabric (Standard seat thickness 70mm with 30mm memory foam top layer)  Medical Grade White Vinyl (Standard seat thickness 50mm)

4. Choose your Seat Configuration (Required)



Closed Front



Open Front



Open Right



Open Left

5. Optional Seat Configuration (Choose One, Both or None)



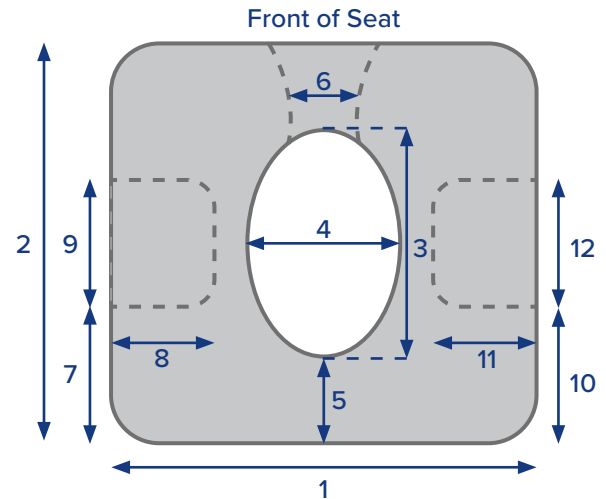
Right Bite  
(Without Open Right)



Left Bite  
(Without Open Left)

6. Specify Relevant Seat Dimensions

1. Seat Width mm
2. Seat Depth mm
3. Hole Length mm
4. Hole Width mm
5. Hole From Rear mm
6. Hole Opening mm
7. Left Bite from Rear mm
8. Left Bite Depth (from side) mm
9. Left Bite Opening mm
10. Right Bite from Rear mm
11. Right Bite Depth (from side) mm
12. Right Bite Opening mm
13. Seat Thickness mm  
(Standard for PU is 70mm / Vinyl is 50mm)



7. Additional Information - Notes:

### Office Use Only

Received by:  
Checked by:  
Serial #/s:

Completed by:  
Completed date: