



PACE WALKING TUTOR

USER MANUAL



Congratulations and thank you for choosing this Aspire Pace Walking Tutor.

This user manual contains a description of the product and important guidelines to ensure correct and safe use. It is important to read this manual carefully prior to use. It is especially important to read the safety requirements and follow these.

Aidacare continuously improves products and reserves the right to change the specifications and functions of products without notice.

If you have any queries please contact your dealer or Aidacare directly. Contact information is located on the last page of this manual.



This product features the CE mark, in compliance with the Medical Devices Regulation 2002 (as amended) Class 1, and the Medical Device Regulation 2017/745.



This product Features the UKCA mark, in compliance with Part II UK MDR 2002 (as amended) Class 1



IMPORTANT: Do not use the Aidacare Aspire Pace Walking Tutor without having first read this user manual

© Aidacare Pty Ltd 2024

No part of this user manual may be copied, distributed, reproduced, scanned or stored on any electronic database, whether in whole or in part in any form or by any means.

Due care has been taken to ensure all the information contained in this user manual is correct at the time of printing. All measurements, pictures, colours and weight capacities are to be used as a guide only. We reserve the right to modify the design or appearance of any product displayed in this user manual without prior notice.

TABLE OF CONTENTS

1. Symbols Used In This User Manual	4
2. Symbols Used On The Product	5
3. Intended Use	5
4. Product Description	6
5. Warnings	6
6. Product Specifications	9
7. List Of Components	9
8. Assembly Guide	10
9. Instructions For Use	14
10. Care, Maintenance & Customisation	18
11. Compliance	19
12. Recycling Instruction	19
13. Warranty	20
14. Manufacturer, Importer & EU Representative	21

1. SYMBOLS USED IN THIS USER MANUAL

The symbols below are used throughout this user manual and on the product to identify warnings and important information. It is very important for you to read them and understand them completely.



WARNING

WARNING! Indicates a potentially hazardous condition/situation. Failure to follow designated procedures can cause either personal injury, component damage or malfunction. On the product, this icon is represented as a black symbol on a white triangle with a black border.



ALWAYS! These actions should be performed as specified. Failure to perform mandatory actions can cause personal injury and/or equipment damage. On the product, this icon is represented as a white infinity symbol on a black dot with a white border.



DO NOT! These actions are prohibited. These actions should not be performed at any time or in any circumstances. Performing a prohibited action can cause personal injury and/or equipment damage. On the product, this icon is represented as a white symbol with a black circle and black slash.

2. SYMBOLS USED ON THE PRODUCT

The manufacturer's sticker shown is a sample sticker only.



Product Code



Serial Number



Manufacturer



Importer



Country of Manufacture



Authorised Representative
in EU



CE Mark



UKCA Mark



Safe Working Load



Read User Manual



Caution



Medical Device

3. INTENDED USE

Aspire Pace Walking Tutors are specifically designed for individuals who, due to a wide variety of reasons, require additional support while walking. This walking tutor is specifically designed for individuals who cannot support weight through their wrists but can still use their forearms for support. This walker is designed for use indoors and on flat surfaces.

- This device should not be used as an aid to help a user from a seated to standing position.
- The height adjusting gas strut is intended to adjust the device height, not to assist with standing assistance of a user.
- Ensure that upright posts are locked in place with hand wheels prior to use.

4. PRODUCT DESCRIPTION

The Aspire Pace Walking Tutor is a four wheeled, lightweight tutor with a height-adjustable frame. This product is made from a combination of steel and aluminium, so it is light and easy to store or transport. This tutor offers great manoeuvrability and stability and is fitted with forearm supports that are height adjustable for a customised fit.

5. WARNINGS



WARNING

WARNING! This User Manual must be read before using the walking tutor. The manufacturer does not take any responsibility for damage and/or injuries caused by the fact that the User Manual has not been followed.



WARNING

WARNING! The walking tutor must not be used by users with serious difficulty balancing or whose muscle strength is too low to stand and walk, even with the extra support of a tutor.



WARNING

WARNING! The decision to use a walker should always be guided by a qualified Health Care Professional, who can also advise and assist with the correct height adjustment and usage instruction.

LIMITATIONS FOR USE



DO NOT exceed the safe working load of 150kg

This walker is designed for use on flat-level surfaces. If encountering sloped or uneven terrain an alternative route should be sought.

- Use the walker only in good technical condition
- **DO NOT** modify the tutor
- **DO NOT** sit on the tutor
- **DO NOT** stand on the tutor
- **DO NOT** use in place of a wheelchair or patient transport device

All wheels **MUST** be in contact with the ground at **ALL TIMES** during use.



NOTE: Fingers or other body parts can be trapped between the tutor's parts during adjustment. Be extremely careful when adjusting the tutor. Observe the dimensions of gaps between the tutor's elements to avoid trapping your fingers or other body parts.



WARNING

WARNING: When using the device in a stationary position, brakes **MUST** always be locked



WARNING

WARNING! Always engage the brakes when you don't plan to move the device.



WARNING

WARNING! NEVER leave the device on slopes without the brakes engaged!

LIMITATIONS FOR USAGE



WARNING

WARNING: The device **MUST NOT** be loaded with more than 150 kg.



WARNING

WARNING! The device is designed to be used only indoors on flat surfaces.



WARNING

WARNING! The device **MUST NOT** be used as an aid to help someone stand up from a seated position.



WARNING

WARNING! The gas strut is intended **ONLY** for support of adjusting the height of the armrests.



WARNING

WARNING! The gas strut **MAY NOT** be used as additional power to assist the user with standing up.



WARNING

WARNING! The device may **ONLY** be used when the armrest supporting columns are locked in the right position with the position locking knobs.

AVOIDING ACCIDENTS



WARNING

WARNING: Use the device **ONLY** for the purpose it is intended for.



WARNING

WARNING! Use the device **ONLY** in good technical condition.



WARNING

WARNING! Avoid making constructive changes on the device, unless you have the manufacturer's written acceptance for such modifications.



WARNING

WARNING! During different adjustments which are possible on the device the user must take care not to squeeze the fingers or other body parts between two moving elements of the device.



WARNING

WARNING! All wheels **MUST** be in contact with the floor at **ALL TIMES** during use. This will ensure the device is properly balanced and should avoid accidents.



WARNING

WARNING! When using the device in a stationary position, the hand brakes **MUST** be locked.



WARNING

WARNING! The brakes **MUST** be in the locked position before entering or leaving the device unattended.



WARNING

WARNING! BE CAREFUL. Fingers or other body parts of a user or/ and assistant can be trapped between device's elements during assembling, disassembling or adjustment of the device.



WARNING

WARNING! The device should only be used with the two locking knobs tightened.

6. PRODUCT SPECIFICATIONS

Overall Height	Overall Length	Overall Width	Overall Depth	Width between forearm supports	Wheel Size	Product Weight
915 - 1325mm	800mm	640mm	240mm	660-790mm	100mm	18kg
36"-52"	31.5"	25"	9.4"	26"-31"	4"	39.7lbs

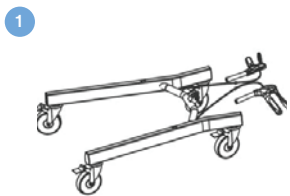
7. LIST OF COMPONENTS

- 1 Forearm Support Pad
- 2 Forearm Support Width Adjustment Locking Knob
- 3 Support Column
- 4 Locking Knob for Height Adjustment
- 5 Locking Castor
- 6 Hand Brake
- 7 Height Adjustment Lever
- 8 Height Adjustment Gas Strut

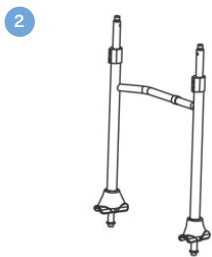


8. ASSEMBLY GUIDE

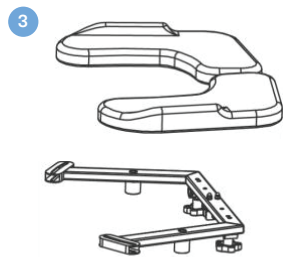
1. CARTON CONTAINS



1 x base frame, with 4 x castors and 2 x brake handles affixed



1 x upright frame with 4 x M12 bolts and 2 x washers



1 x set of padded forearm supports with forearm support frame



Gas Strut



Release lever



Hand Bolt



Lever handle



M8 Bolts

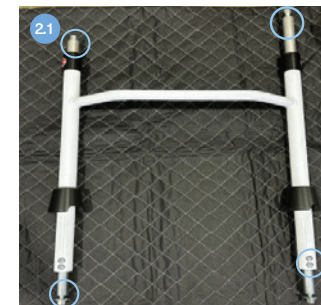


1 x set of assembly tools (10mm Allen key, 6mm Allen key, 13mm Spanner)

NOTE: If any part is missing or damaged, do not proceed with the assembly. Contact Aidacare or your Aspire Dealer immediately.

2. SECURING THE BASE FRAME

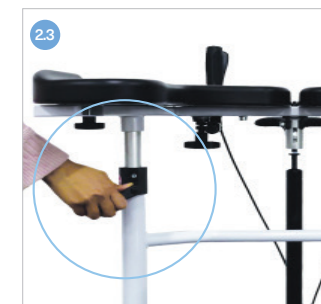
2.1 Using a 10mm Allen key, remove the two M12 bolts and washers from the bottom and the two M12 bolts from the top of the upright frame. **NOTE : Save the top bolts to use in step 3.1.**



2.2 Attach the upright frame to the base frame by securing the walker with the M12 bolts and washer previously removed (from the bottom of the upright frame), inserting them through the bottom of the base frame, and tightening them using the 10mm Allen key.

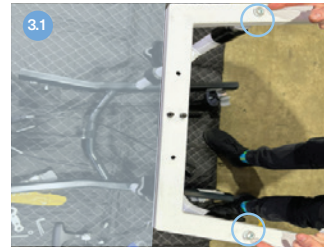


2.3 Screw the adjustable lever handle into the black bracket of the upright frame by hand. To adjust the lever handle, press the button, rotate the handle to the desired position, and release it.



3. ATTACHING FOREARM SUPPORTS AND HANDLES

3.1 Attach the forearm support frame to the upright frame and the base frame assembled in step 2. Ensure they are properly aligned, and secure them using the **bolts saved from step 2.1**. Use the 6mm Allen key to tighten them securely.



3.2 Insert the brake handles into the forearm supports and adjust the brake handles to the desired length and angle.



3.3 Secure them in place by tightening the locking levers located under the brake handles by hand.

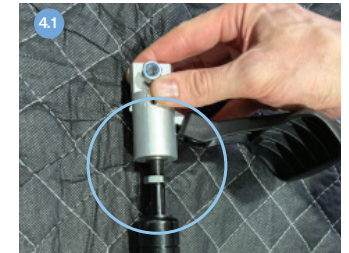


3.4 Install the padded section of the forearm supports by placing them on top of forearm supports frame and securing them with two M8 bolts + two hand bolts to allow for angle adjustment. Use the 6mm Allen key to tighten them securely.



4. ATTACHING GAS STRUT

4.1 Attach the release lever to the height adjustment strut by using the locking nut provided with the gas strut and a 17mm spanner. Ensure the nut is screwed halfway onto the threaded section of the gas strut.



NOTE : If you screw the locking nut on too far this will activate the gas strut and cause it to extend. In this case you simply need to loosen it slightly then assemble the unit with the gas strut extended. Once the assembly is complete you should be able to lower the height of the unit with the release lever installed in step 4.3.

4.2 Remove the locking bolt set that is screwed into the bracket in the middle of the base frame. Insert the bottom of the height adjustment gas strut into the bracket and secure it with the locking nut kit, using a 6mm



4.3 After completing steps 4.1 and 4.2, mount this attachment to the forearm frame through the middle black bracket. Secure the release lever with the gas strut (completed in step 4.1) by tightening the black bolt using a 6mm Allen key.



NOTE : If you are unable to adjust the height of the unit it is likely because the locking nut was installed incorrectly in step 4.1. You may need to loosen or tighten it.

5. FINAL CHECKS

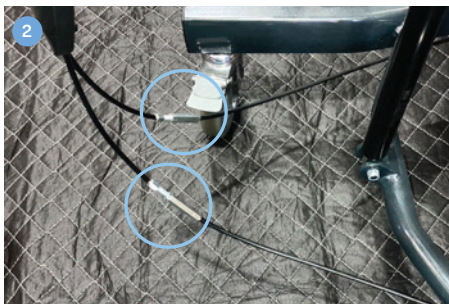
5.1 Test the brakes to ensure they function correctly.

- 5.2 Ensure all locking knobs and levers are securely tightened.
- 5.3 Verify that the device is stable and there are no loose sections or components.
- 5.4 Ensure all wheels are in contact with the floor.
- 5.5 Make sure the gas strut and release lever are adjusted correctly for easy height adjustment

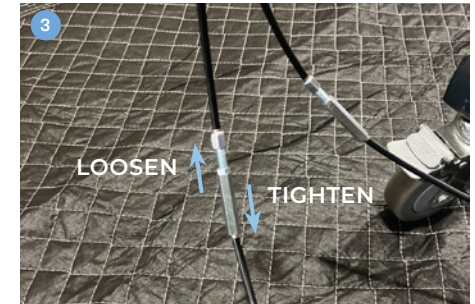
9. INSTRUCTIONS FOR USE

ADJUSTING THE BRAKE SENSITIVITY

- 1. Test the brakes and make sure each brake handle is equally sensitive and that the unit is unable to be moved with the brakes applied.
- 2. If the brakes are too loose or too tight you will need to adjust the brake line at one or both of the points indicated in image on the right.

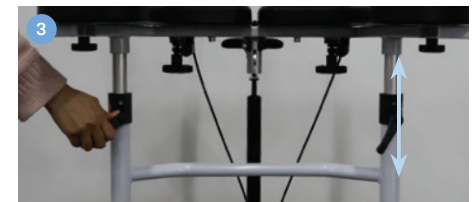


- 3. Loosen or tighten the brakes by moving the brake adjustment screw up or down as indicated in image. Move it up the line to loosen the brakes and down the line to tighten.



ADJUSTING THE HEIGHT OF FOREARM SUPPORTS

- 1. Loosen the two position locking knobs located on the support columns.
- 2. Unlock the height adjustment lever by pulling it up. Adjust the forearm supports to your desired height by pushing them down or letting them move up freely.
- 3. Tighten the two locking knobs.



- The forearm supports should be correctly adjusted to the height of the user's elbows when standing with arms directed downwards.



ADJUSTING THE WIDTH OF FOREARM SUPPORTS

- Loosen the two position locking knobs located under the forearm supports.
- Adjust the supports to your desired width by sliding them outwards or inwards.
- Tighten the two locking knobs.



ADJUSTING LENGTH AND ANGLE OF THE PUSH HANDLES

- Release the two position locking levers located under the push handles.
- Adjust the handles to your desired length and angle for easy and comfortable gripping.
- Tighten the locking levers.



USING THE HAND BRAKES

TO STOP THE WALKER Simply pull the brake handles rearwards towards the hand grips.



TO REMAIN STATIONARY Hold the brake handles in the "LOCKED" position.



TO START MOVING Release the brake handles. It will automatically move to the front and release the brakes.

LOCKING/UNLOCKING THE HAND BRAKES

TO LOCK THE BRAKES Push the brake handles to the front until you hear a "click" sound.



TO UNLOCK THE BRAKES Pull the brake handles backwards until they release.

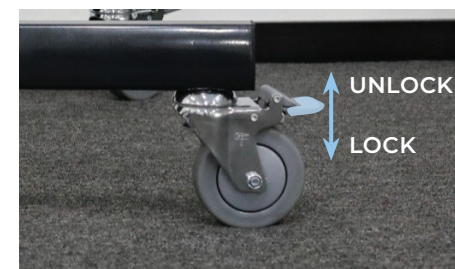


WARNING! When using the walker in a stationary position, the hand brakes **MUST** always be locked.

LOCKING/UNLOCKING CASTOR BRAKES

LOCK BRAKES Press your foot on the brake pedal. Repeat for all four wheels.

UNLOCK BRAKES: Push the brake pedal upwards with the nose of your foot until it unlocks. Repeat for all four wheels.



10. CARE, MAINTENANCE & CUSTOMISATION

CLEANING INSTRUCTIONS:

- Clean the walker regularly with a damp cloth
- Use a mild washing agent and warm water for excess dirt build up
- **DO NOT** use harsh abrasives or bleach based agents which may cause damage or discolouration
- Dry with a soft cloth

WHEELS:

- Clean wheels with a mild washing agent and warm water.
Remove hair and other dirt from axles
- Lubricate with multi-purpose oil periodically or if wheels begin to squeak

MAINTENANCE:

- Ensure that every part of the walker is secure at **ALL times**
- Check all screws for tightness. If not, tighten if necessary
- Replace any broken, damaged or worn items immediately

MAINTENANCE SCHEDULE

Weekly	Periodically	Yearly	Serviceable Components
<ul style="list-style-type: none"> • Check brake function • Check all wheels are secure • Check all fastenings such as nuts, bolts and hinges are fastened correctly and functioning normally 	<ul style="list-style-type: none"> • Check hand grips for wear • Check frame bolts are secure • Check front and rear axle bolts are secure • Check for wear or cracks • Check wheels for splitting or damage • Check forearm pad upholstery for wear and that it is secured to frame 	<ul style="list-style-type: none"> • Take your walker to an authorised repairer for a full check, clean, service and lubrication of all moving parts. 	<ul style="list-style-type: none"> • Wheels • Bag • Hand grips • Forearm Supports • Brake Cables • Seat • Brake Handles • Bearings • Nuts and Bolts

CUSTOMISATION

All walker customisation, modification and or alterations made to this product are considered as “custom” changes. They may cause the product to no longer meet safety standards and should be considered prior to commencement.

Any custom modification of the walker is not warranted by Aidacare and will void the warranty.

11. COMPLIANCE

Aspire Walking Tutors are manufactured and independently tested to the market-relevant compliance standards.

Labels on the walkers address compliance requirements and users should familiarise themselves with these prior to use.

12. RECYCLING INSTRUCTION

This product should not be mixed with General household waste. Please follow the diagram below to identify different materials on the product



13. WARRANTY

AIDACARE warrants its products to be free from material – and workmanship-related defects under normal use and service. From the date of purchase, within the period stated below, we shall repair or replace without cost to the original customer, any part assembly or portion thereof which shall be returned to **Aidacare** and deemed to be defective by our own inspection.

1 YEAR WARRANTY

Above warranty only applies to manufacturer defect only, and does not cover wear and tear through use.

WARRANTY IS CONTINGENT UPON ANNUAL SERVICING BEING COMPLETED FOR THE LENGTH OF THE WARRANTY PERIOD.

Aidacare cannot be held responsible for any personal injury, damage to the Pace Walking Tutor or damage to property resulting from improper or unsafe use of the product. No warranty claim shall apply where the product or any part thereof has been modified, varied, altered or damaged either accidentally or through improper or negligent use.

No warranty claim shall apply where the Pace Walking Tutor has been repaired or serviced by parties other than those accredited and/or approved by **Aidacare**.

ALL WARRANTIES MADE ARE BACK TO BASE WARRANTIES MEANING THAT ANY PARTS REQUIRING REPAIR NEED TO BE RETURNED TO THE NEAREST AIDACARE SERVICE CENTRE AT THE CUSTOMER'S EXPENSE – PLEASE CONTACT AIDACARE FOR A CURRENT LIST OF SERVICE CENTRE LOCATIONS.

SPARE PARTS

Spare parts list available upon request from **Aidacare**.

14. MANUFACTURER, IMPORTER & UK REPRESENTATIVE

If you have any questions, you can contact:



Manufacturer:

Aidacare Pty Ltd ABN 40 134 398 833

Building 3A, 1 Moorebank Avenue,
Moorebank NSW 2170 Australia

1300 133 120 | product@aidacare.com.au



EU Representative:

European Healthcare & Device Solutions (Ireland) Ltd

Stratton House, Bishopstown Road
Cork T12 Y9TC Ireland

info@europeandevicesolutions.eu



Importer:

Aidacare Ltd Registration 13785408

Arcadia House, Maritime Walk, Ocean Village,
Southampton SO14 3TL United Kingdom

01622 541235 | info@aidacare.co.uk

AIDACARE PTY LTD

Building 3A, 1 Moorebank Avenue,
Moorebank NSW 2170
Australia

1300 133 120 | aidacare.com.au

AIDACARE LIMITED

Arcadia House, Maritime Walk,
Ocean Village, Southampton SO14 3TL
United Kingdom

01622 541235 | aidacare.co.uk

MADE IN PRC

ASUM103.15 030924

